

Hanoi, 24th November, 2013

Training Global Leaders for Integrated Medical System for Healthy-Longevity Society

Kyoto University
Japan

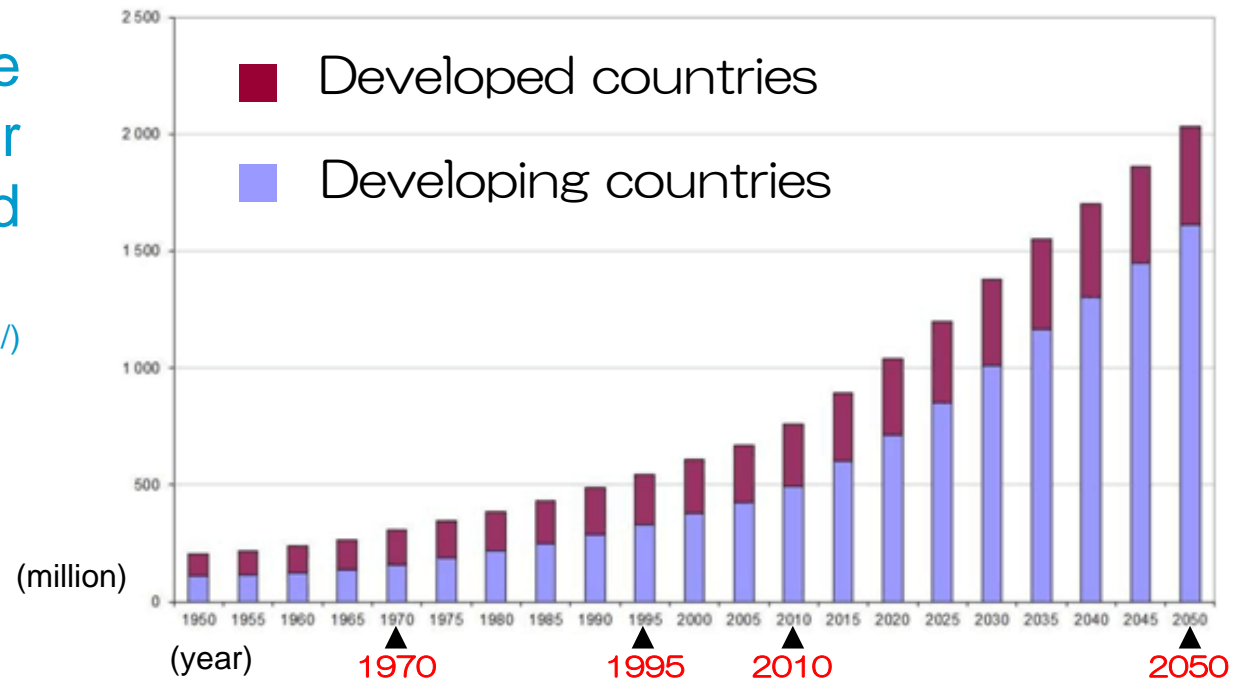


LIMS:
Research and Educational Unit of
Leaders for Integrated Medical System

an Unprecedented Aging Society

Number of people aged 60 or over in the world

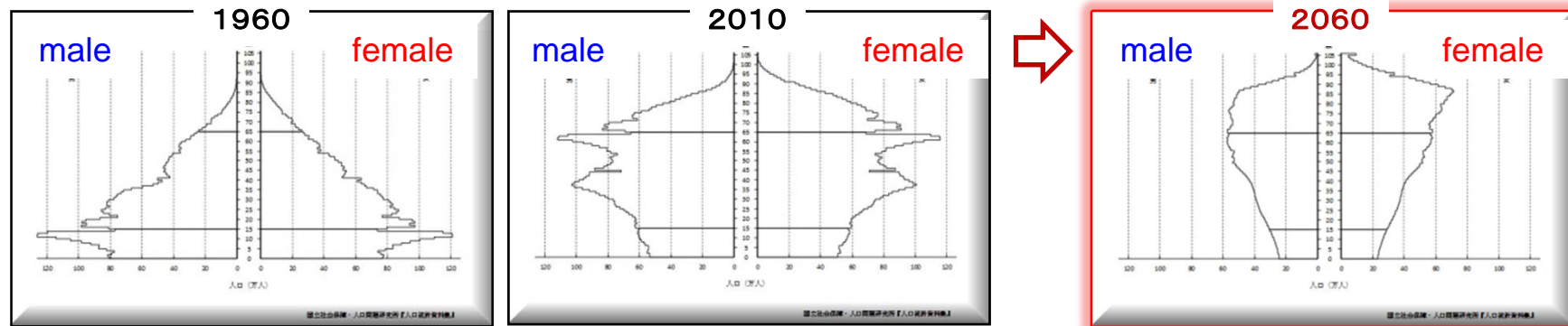
(data from <http://www.unfpa.org/>)



The percentage of national population aged at 65 or older

	Viet Nam		Japan	
Aging society	7.0%	(2011)	7.1%	(1970)
Aged society			14.6%	(1995)
Extremely aged society			21.5%	(2007)
			23.0%	(2010)

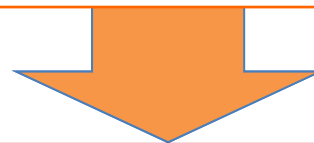
Japanese Contributions



(National Inst. Population & Social Security Res.「demographics 2011」)

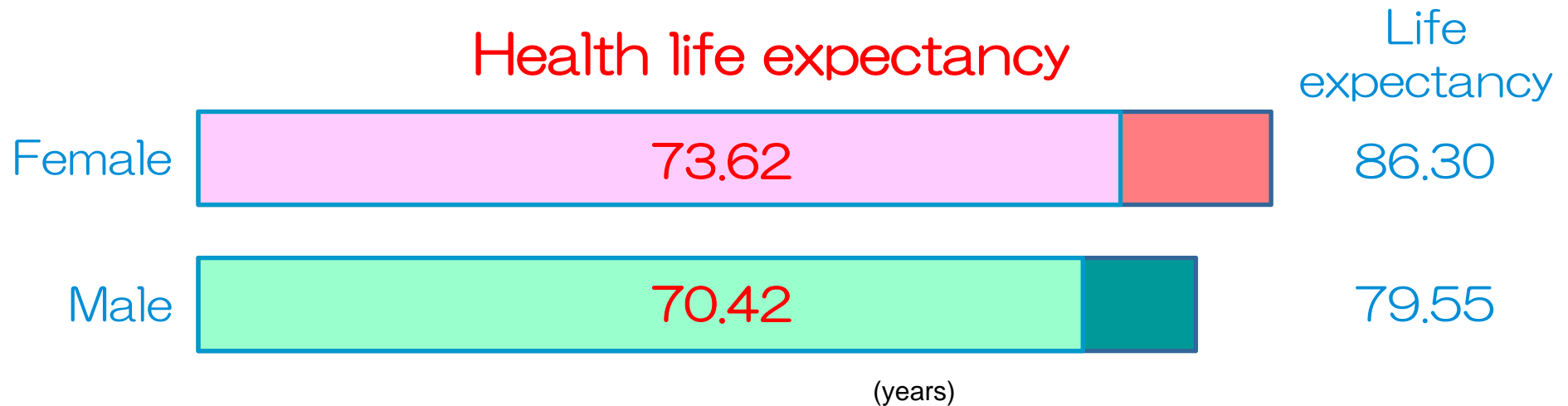
Japan is one of the first industrialized countries that face the problems of an unprecedented aging society.

Japan has to successfully achieve medical innovation to cope with it and contribute to following countries and regions of the world by showing good models.



Our approach is to train young leaders who can overlook the problems and guide the medical innovation not only in Japan but also in various societies and regions in the world.

Fruitful Healthy-Longevity Society



(years)
surveyed in 2010, published in 2012
by Japanese Ministry of Health, Labour and Healthcare,

The Japanese government plans to prolong health life expectancy. At first, it aims to make the growth of health life expectancy exceeding that of life expectancy.

Kyoto University's LIMS program seeks **how to implement the growth of health life expectancy** along with **the improvement of QOL** for the elderly and related people.

Comprehensive Approaches to Complex Problems

problems

- healthy longevity and high Q O L
- social inclusion of the elderly
- health care cost management

needs

- integration of medial/welfare/home-care systems
- supports respecting total aspects of individual life
- prevention of diseases and accidents with good lifestyle

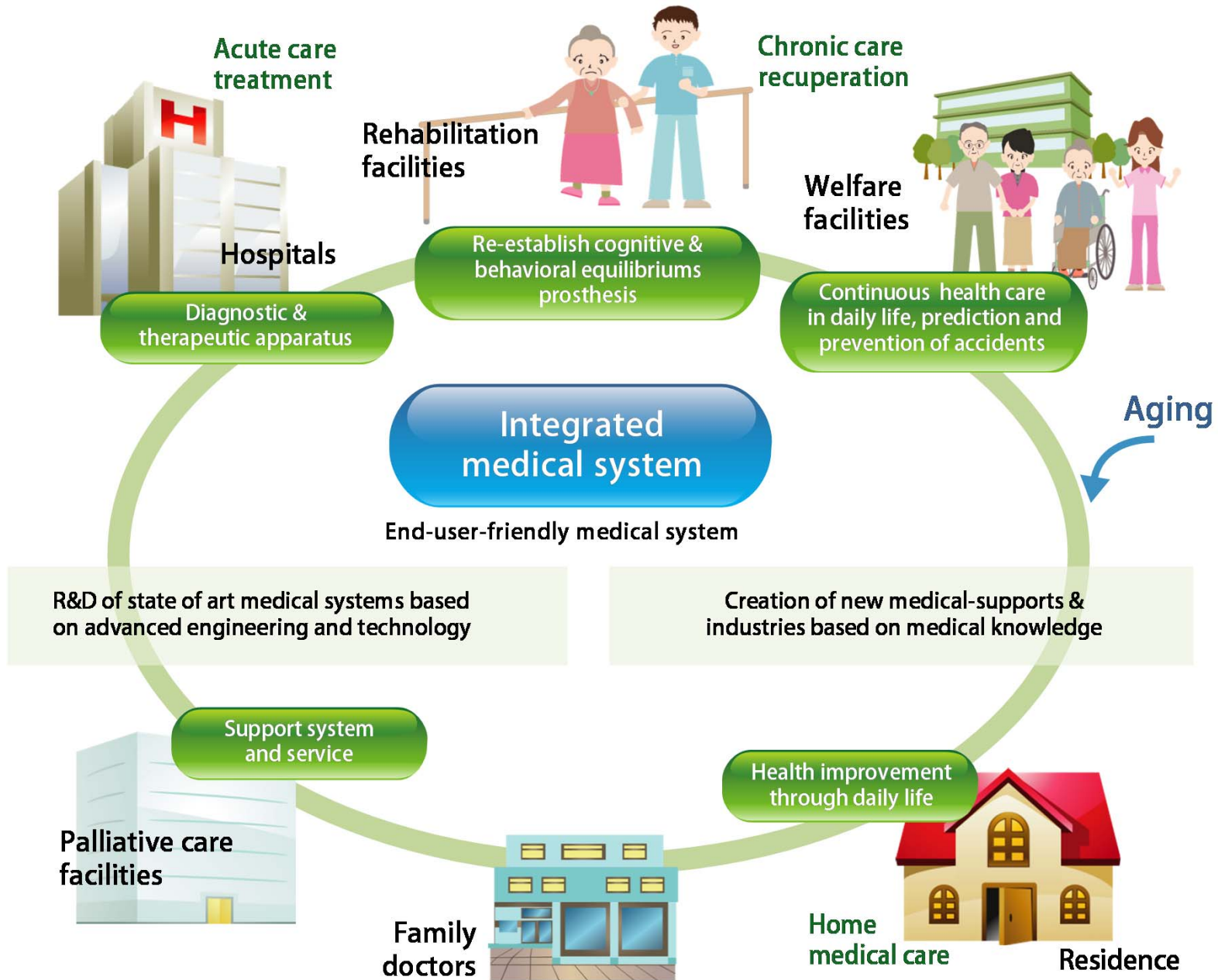
Japanese model of healthy longevity

- mutual aid among three generations
- medical supports achieved by the community
- to maintain health by staying at work

expectation

Leaders to create integrated medical system based on social needs by making good use of technology

Integrated Medical System and New Medical Industries



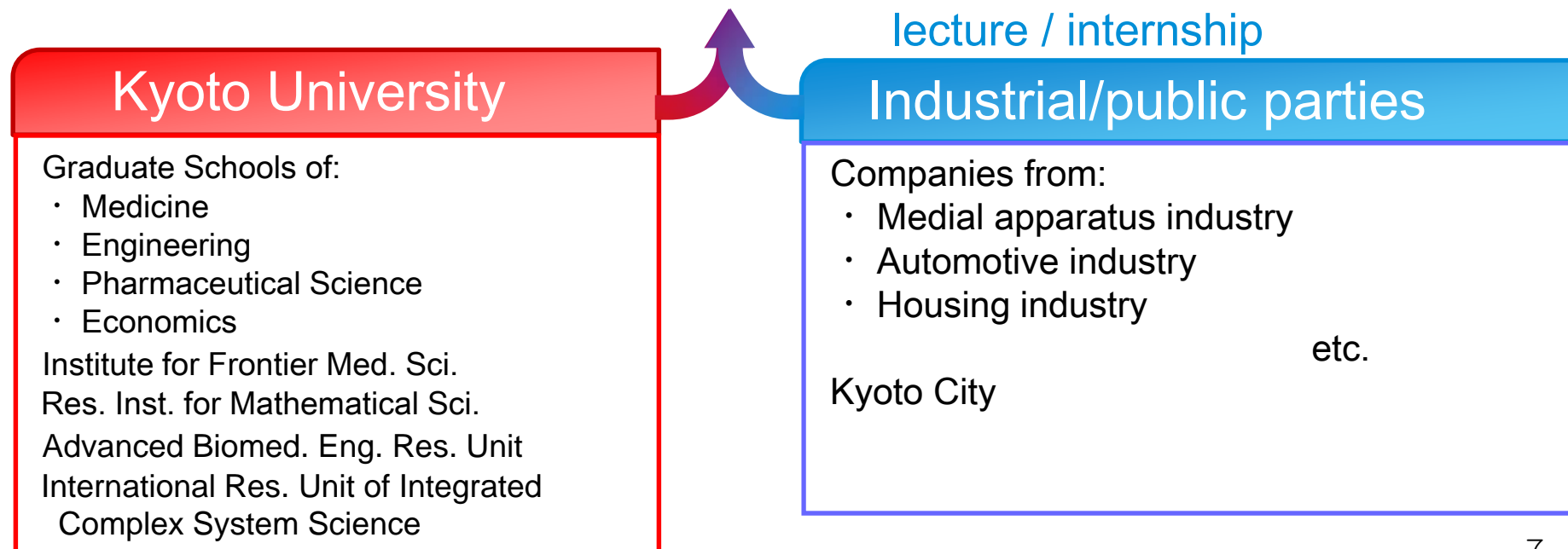
Research and Educational System

Training non-medical students in medical environment

- fundamental medical knowledge for non-medical graduates
- understanding of social needs (especially in medical and care practices)
- specialized knowledge and skills in medico-engineering areas
- health economics, health policy, medical ethics, intellectual properties, & global standardization
- internship in companies and foreign institutes



collaboration of industry, government and academia



LIMS Course Schedule

	1 st year	2 nd year	3 rd year	4 th year	5 th year
Research	pre-research		thesis research		
	colloquium				
Exercise Practice	debate				
	practice (Hospital, Nursing home, public office, international organization)				
			internship in foreign countries, Industrial and public parties		
Lecture	Interdisciplinary application				
	ethics, health economics, IP & standardization				
	medical engineering for society I, II				
	basic lectures				

Doctorate degree
 Certificate of the program



Graduate schools and Program start in April

Thesis Evaluation
 (Medical science, Human health science, Engineering, Pharmaceutical science)



Program development review

the World Health Summit

- As a member of the M8 Alliance, Kyoto University aims at improving global health, working with political and economic decision makers to develop **science-based solutions** to health challenges worldwide.
- At the World Health Summit 2013 in Berlin, Kyoto University inaugurated international discussion and cooperation concerning **“trans-disciplinary collaboration for healthy aging.”**
- In April 2015, Kyoto University will host the World Health Summit **Regional Meeting**. We welcome your participation.



the M8 Alliance

Training Program of Leaders for Integrated Medical System for Fruitful Healthy-Longevity Society

LIMS

Research and Educational Unit of
Leaders for Integrated Medical System

info@lims.kyoto-u.ac.jp

<http://www.lims.Kyoto-u.ac.jp>

